

# SHANTUI

VALUE THAT WORKS

# SE210W

Excavator



- . Engine Model
- . Gross Power
- . Operating Weight

Weichai WP7G158E301  
166 kW @2000rpm  
21,100kg



**POWERSTAR**  
Polokwane





# SE210W SPECIFICATIONS

## ENGINE

Model	Weichai WP7G158E301
Type	High pressure common rail, turbocharged
No. of cylinder	6
Emission	Tier 3 / Euro III
Displacement	7.47 L
Power output	116 kW/ 2000 rpm

## HYDRAULIC SYSTEM

Type	Axial variable plunger pump
Max. discharge flow	2x218 L/min

## DIGGING FORCE (ISO6015)

Bucket	127/ 135 kN
Arm	92.5/ 99 kN

## BUCKET

Type	Backhoe bucket
Capacity	(0.9 m <sup>3</sup> )
Width	1250 mm

## TRAVEL SYSTEM

Type	Axial variable plunger motor
Track roller	2x7
Carrier roller	2x2
Track shoe	2x46
Travel speed	3-5 km/h
Max. Drawbar pull	195 kN
Gradeability	70% (35°)

## SWING SYSTEM

Swing motor type	Swash plate plunger motor
Swing speed	0-11.5 r/min
Brake type	Pressure release mechanical braking

## REFILL CAPACITIES & LUBRICATIONS

Fuel tank	360 L
Cooling system	25 L
Engine oil	24 L
Hydraulic oil tank	250 L
System Capacity (Hyd)	420 L

## OPERATING WEIGHT AND GROUND PRESSURE

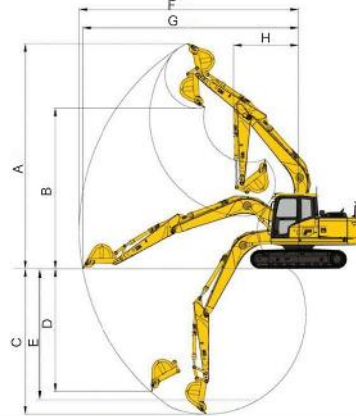
Shoe width	600 mm
Ground pressure	47.3 kPa
Operating weight	21100 kg

## STANDARD EQUIP

FIRE EXTINGUISHER	
AIR CON	
STROBE LIGHT	
REFLECTIVE TAPES	
HAMMER PIPING	
WINDOW GUARD	

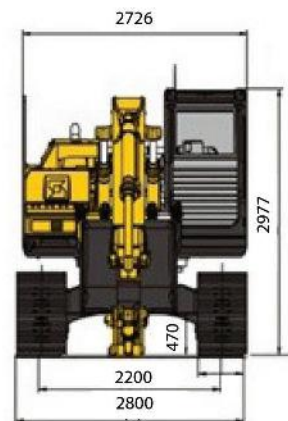
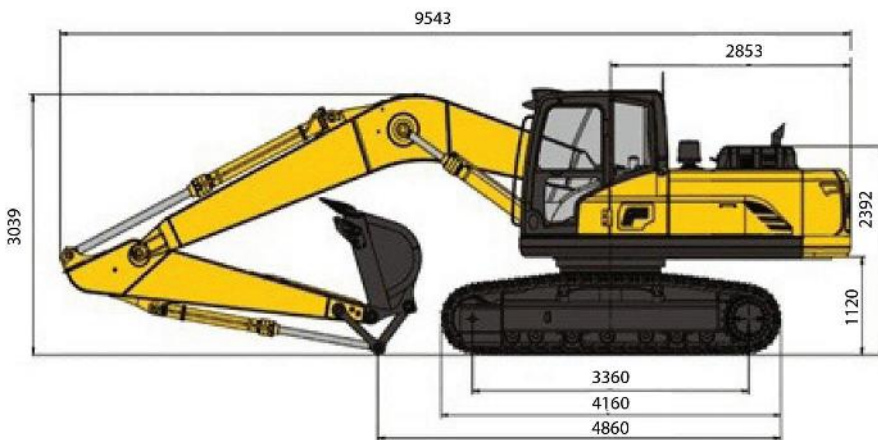
## SCOPE OF WORK (mm) (BOOM: 5700 mm ARM: 2400 mm)

A	Max. digging height	10029
B	Max. dumping height	7132
C	Max. digging depth	6141
D	Max. vertical digging depth	5485
E	Max. depth cut for 2500mm level bottom	6004
F	Max. digging distance	9860
G	Max. digging radius at ground level	9673
H	Min. swing radius of work equipment	3041



## DIMENSIONS(mm)

Overall length	9543
Ground contact length (Transportation)	4860
Overall height (to top of boom)	3039
Overall width	2800
Overall height (to top of cab)	2977
Counter weight ground clearance	1120
Ground clearance	470
Tail swing radius	2905
Tread	3360
Track length	4160
Track gauge	2200
Track width	2800
Shoe width	600
Bonnet height	2392
Revolving frame width	2726
Distance from swivel center to tail	2853



\* Please note: The manufacturer reserves the right to make changes to the design, form, colour and specifications of any Shantui brochure without notice. The picture shown is for illustrated purposes only. \*