

**SHANTUI**  
VALUE THAT WORKS

**SD32W**  
Crawler Dozer



. Engine Model  
. Gross Power  
. Operating Weight

Cummins NTA855-C360S10  
257kW(350hp)@2000rpm  
39,404kg

 **POWERSTAR**  
Polokwane



# SD32W SPECIFICATIONS

## ENGINE

Engine	Cummins NTA855-C360S10
Emission	Euro II
Rated revolution	2000 rpm
Gross power	257 kW (350hp) @ 2000 rpm
Net power	235 kW (320hp) @ 2000 rpm
Number of cylinder-borexstroke	6 - 140x152 mm
Displacement	14.01 L
Max. torque	1509 N.m @ 1400 rpm
Cooling system	Mechanic fan

## DRIVE SYSTEM

Drive system	Manufactured by SHANTUI, torqflow transmission, 3 gears forward and 3 gears backward.
--------------	---

Traveling speed	Forward	F1:3.6km/h F2:6.6km/h F3:11.5km/h
	Backward	R1:4.4km/h R2:7.8km/h R3:13.5km/h
Max. theoretical traction force		318.2 kN
Torque converter		3-element, single stage, 1-phase
Transmission		Planetary gear and torqflow transmission hydraulically actuated, forced lubrication
Central drive		Spiral bevel gear, single-stage speed reduction, splash lubrication
Steering clutch		Wet multiple disc, disc spring loaded, hydraulically actuated, hand operated, interconnected with steering brake.
Brake clutch		Wet, contracting band, foot operated with hydraulic booster
Final drive		Spur gear, double reduction ,splash lubrication

## CHASSIS SYSTEM

Type	Swing type of sprayed beam, suspended structure of equalizer bar
Track shoe type	Single grouser
Track gauge	2140 mm
Width of track shoe	560 mm (heavy duty)
Track grounding length	3150 mm
Track grounding area	35280 cm <sup>2</sup>
Number of track shoe	41 pcs/side
Grounding pressure (std.configuration)	84.1 kPa
Number of carrier roller	2 pcs/side
Number of track roller	7 pcs/side
Pitch	228.6 mm

## REFILL CAPACITY

Fuel capacity	640 L
Coolant liquid capacity	79 L
Engine oil capacity	45 L
Hydraulic oil tank	97 L
Transmission	185 L
Final drive	55 L/side

## OPERATING WEIGHT

Operating weight with ripper	39404 kg
------------------------------	----------

## BLADE

Blade type	Straight-tilt (Standard)
Blade capacity	7.2 m <sup>3</sup>

## DIMENSION

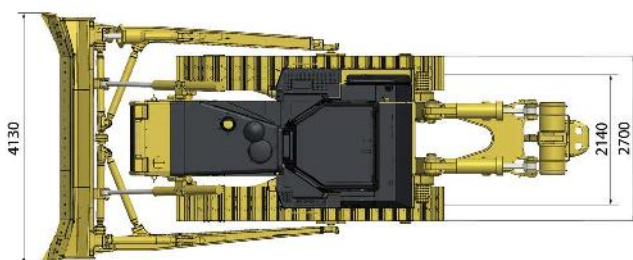
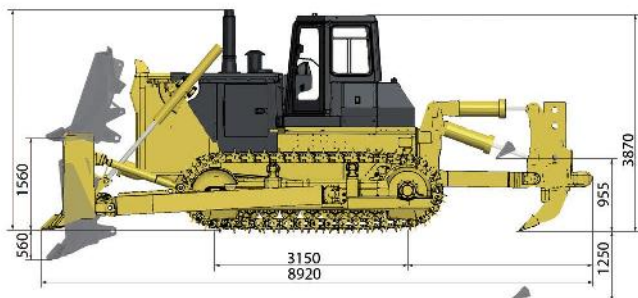
Machine height (with ROPS)	3870 mm
Track grouser height	72 mm
Ground clearance	500 mm
Machine length (without blade)	7550 mm
Machine length (with blade)	8920 mm
Machine width ( with blade)	4130 mm
Machine width (without blade)	3190 mm
Max. lifting height of blade	1560 mm
Max. digging depth of blade	560 mm
Digging angle of blade	55°±3°
Blade width	4130 mm
Blade height	1590 mm
Width from end of left track shoe to end of right track shoe (standard)	2700 mm

## RIPPER

Type	Three-shank	Single shank (Std)
Weight	4954 kg	4404 kg
Max. ripping depth	842 mm	1250 mm
Max. lifting height	883 mm	955 mm
Ripper length	2467 mm	2855 mm
Ripper width	2420 mm	1186 mm
Departure angle	34.5°	34.3°
Ripping width	2240 mm	-
Distance between	1120 mm	-

## STANDARD EQUIP

FIRE EXTIGUISHER
AIR CON
ROPS & FOPS
REVERSE BUZZLE
STROBE LIGHT
REFLECTIVE TAPES
CAB FAN



\* Please note: The manufacturer reserves the right to make changes to the design , form, colour and specifications of any Shantui brochure without notice. The picture shown is for illustrated purposes only. \*