

SHANTUI

VALUE THAT WORKS

SD16

Crawler Dozer



. Engine Model
. Gross Power
. Operating Weight

Weichai WD10G178E25
131kW(175hp)@1850rpm
18,631kg

 **POWERSTAR**
Polokwane



SD16 SPECIFICATIONS

ENGINE

Engine	WEICHAH WD10G178E25
Emission	Euro-II
Rated revolution	1850rpm
Gross power	131 kW (175hp) @ 1850 rpm
Net power	121 kW (160hp) @ 1850 rpm
Number of cylinder-borexstroke	6 - 126x130 mm
Displacement	9.726 L
Max. torque	830 N.m @ 1100-1200 rpm
Cooling system	Mechanic fan

DRIVE SYSTEM

Drive system	Manufactured by SHANTUI, 3 gears forward and 3 gears backward.	
Traveling speed	Forward	0~3.29km/h, 0~5.82km/h, 0~9.63km/h
	Backward	0~4.28km/h, 0~7.59km/h, 0~12.53km/h
Torque converter	3-element, single stage, 1-phase	
Transmission	Planetary gear and torqflow transmission hydraulically actuated, forced lubrication	
Bevel gear shaft	Spiral bevel gear, single-stage speed reduction, splash lubrication	
Steering clutch	Wet multiple disc, disc spring loaded, hydraulically actuated, hand operated, interconnected with steering brake	
Brake	Wet, contracting band, foot operated with hydraulic booster	
Final drive	Spur gear, double reduction ,splash lubrication	

CHASSIS SYSTEM

Type	Swing type of sprayed beam, suspended structure of equalizer bar	
Track shoe type	Single grouser	
Track gauge	1880 mm	
Width of track shoe	510 (Standard)	
Track grounding length	2430 mm	
Track grounding area	24786 cm ²	
Number of track shoe	37 pcs/side	
Grounding pressure (standard configuration)	58 kPa	
Number of carrier roller	2 pcs/side	
Number of track roller	6 pcs/side	
Pitch	203 mm	

REFILL CAPACITY

Fuel capacity	315 L
Coolant liquid capacity	62.8 L
Engine oil capacity	24 L
Hydraulic oil tank	112 L
Transmission	52 L
Drive axle	70 L
Final drive	21 L/side

OPERATING WEIGHT

Standard with ripper	18631 kg
----------------------	----------

BLADE

Blade type	Straight tilt (Standard)
Blade capacity	3.5m ³

DIMENSION

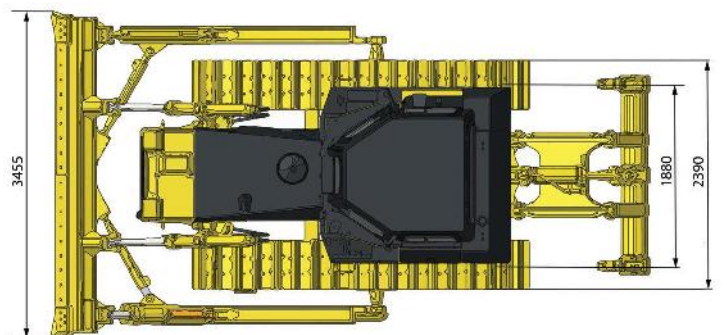
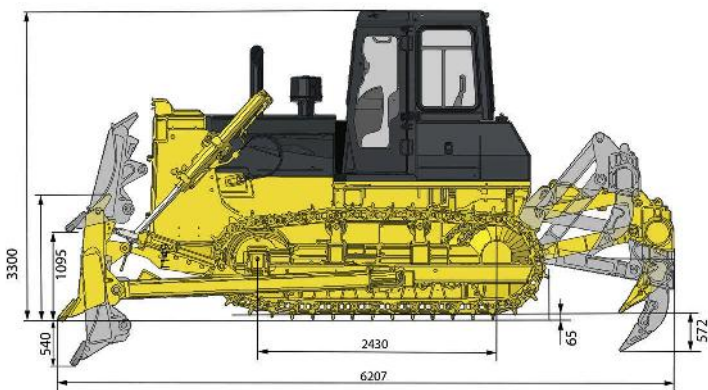
Machine height	3300 mm
Track grouser height	65 mm
Ground clearance	400 mm
Machine length (with ripper & blade)	6207 mm
Machine width (with blade)	3455 mm (Straight-tilt)
Machine width (without blade)	2950 mm
Max. lifting height of blade	1095 mm
Max. digging depth of blade	540 mm
Digging angle of blade	55°±3°
Blade width	3455 mm (Straight-tilt)
Blade height	1149 mm (Straight-tilt)
Width from end of left track shoe to end of right track shoe (standard)	2390 mm

RIPPER

Type	Three-shank ripper
Weight	1631 kg
Max. ripping depth	572 mm
Max. lifting height	592 mm
Ripper length (at deepest ripping)	1580 mm
Ripper width	2080 mm
Departure angle (at highest lifting)	32.1°
Ripping width	1900 mm
Distance between ripper teeth	950 mm

STANDARD EQUIP

FIRE EXTINGUISHER
AIR CON
ROPS & FOPS CAB
REVERSE BUZZLE
STROBE LIGHT
REFLECTIVE TAPES
CAB FAN



‘ Please note: The manufacturer reserves the right to make changes to the design , form, colour and specifications of any Shantui brochure without notice. The picture shown is for illustrated purposes only. ‘